

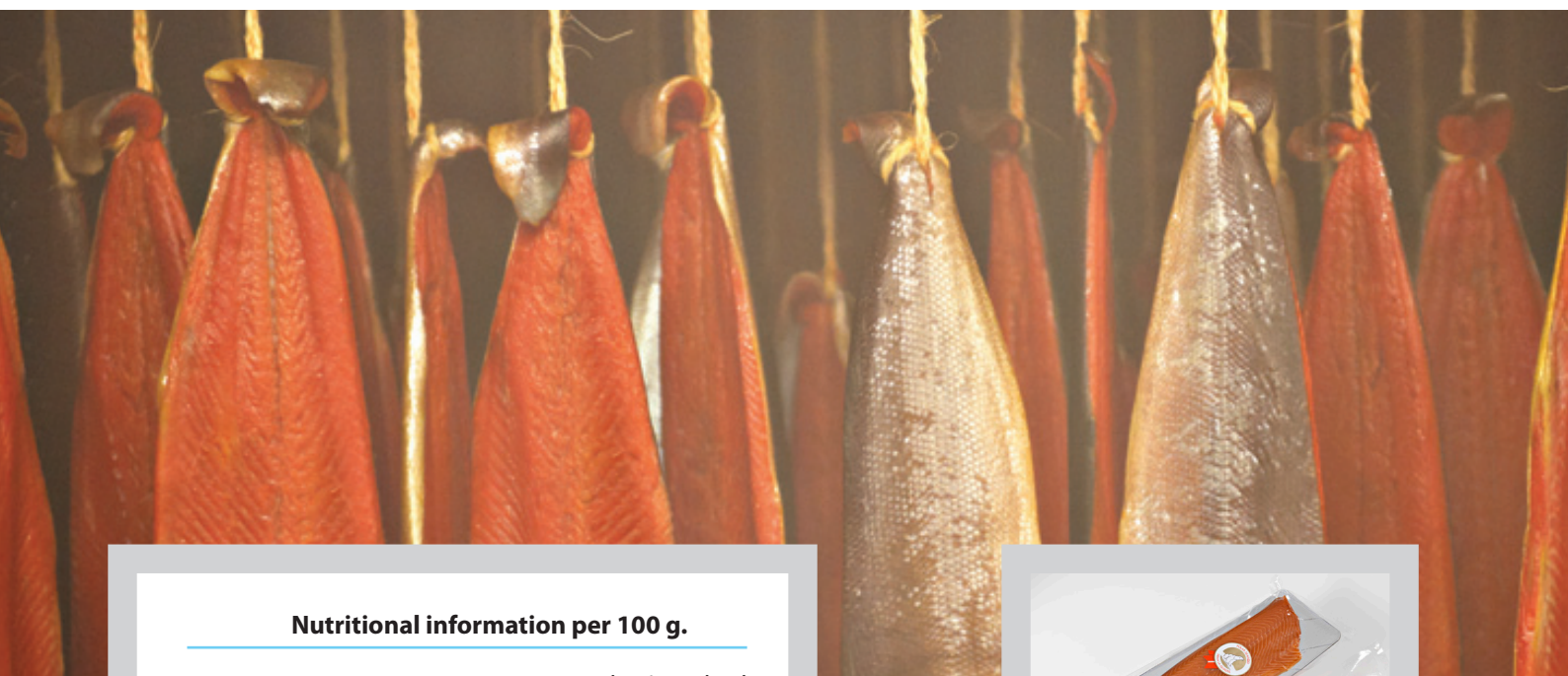
Product specification

Smoked Salmon

Product:	Smoked Salmon, sliced or whole side. Dry salted
Latin name:	Salmo salar
Farm area:	Farmed in Norway
Net weight:	0,4-0,6 / 0,6-0,8 / 0,8-1,2 / 1,2-1,6 / 1,6-1,9 / 1,9-2,3 / 2,3-2,7 / 2,7 + kg
Ingredients:	Salmon and salt
Natural smoke:	Smoked over beech wood
Packing type:	The salmon is placed on a plate, then vacuum packed.
Allergen	Fish

Organoleptic Standards

Typical look:	Sliced without skin, whole side with skin on. Although care has been taken to remove bones, some may remain
----------------------	---



Nutritional information per 100 g.

Energy	675 kJ / 161 kcal
Protein	21,4 g
Carbohydrate	0 g
Fat	8,4 g
Of which saturates	1,6 g
- polyunsaturates	3,4 g
of which Omega-3 fatty acids	3,3 g



POLAR SALMON

